





COMPANY PROFILE

- ▶ **NAME:** **MECHANICAL SYSTEMS LIMITED**
- ▶ **ADDRESS:** PLOT 225, TRANS AMADI
INDUSTRIAL LAYOUT,
OFF ORDINANCE JUNCTION,
PORT HARCOURT, RIVERS STATE,
NIGERIA
- ▶ **POSTAL ADDRESS:** P. O. BOX 7171,
PORT HARCOURT
- ▶ **TELEPHONE:** 084- 462128 - 9
- ▶ **FAX:** 084 – 462129
- ▶ **Website** www.mslnigeria.com
- ▶ **E-MAIL:** info@mslnigeria.com
Mechanical_sis@yahoo.com



4



INTRODUCTION

- ▶ **MECHANICAL SYSTEMS LIMITED** is an indigenous, limited liability company incorporated on the 3rd April 2000, according to the relevant statutory provisions of the Federal Republic of Nigeria.
- ▶ **Mechanical Systems Limited** has signed Technical Partnership agreement with many companies.



5



INTRODUCTION

- **Mechanical Systems Limited** is driven by the desire to ensure maximum efficiency and technical expertise in all our services, we take pride in quality workmanship and in our ability to deliver within budget and schedule.



- In compliance with all government applicable legislations, **Mechanical Systems Limited** is fully abreast with all the administrations of Security Plans, **Community Affairs, Health, Safety, Environment and Training** of Nigerians in line with the Nigerian Content Directory (NCD)

6

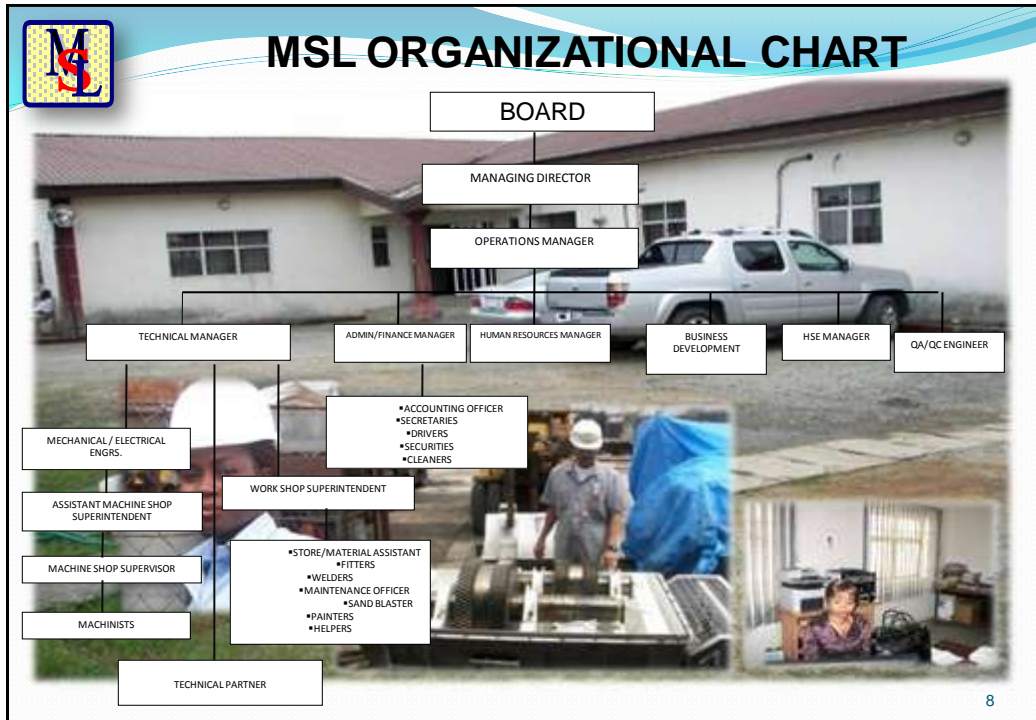


MISSION STATEMENT

MSL is dedicated to making a difference by providing efficient services; Using state-of-the-art technology to ensuring professional satisfaction to customers.



7



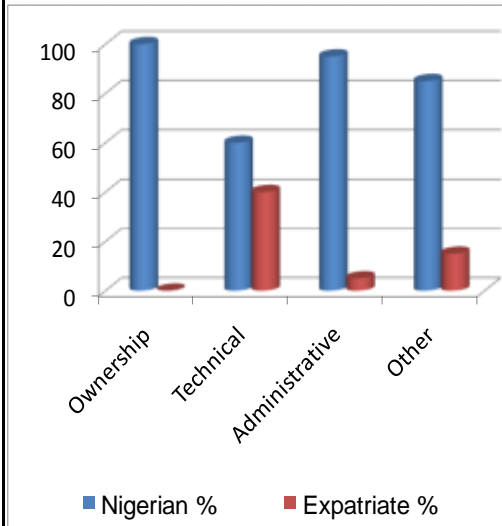
MSL MANAGEMENT TEAM

S/No.	NAME	POSITION	NATIONALITY
1	JAMES AUDU	MANAGING DIRECTOR	NIGERIAN
2	A. J GUERRERO	TECHNICAL DIRECTOR	EXPATRIATE
3	JACKSON KALAGBOR	OPERATIONS MANAGER	NIGERIAN
4	ANTHONY OKWUADIGBO	QHSE MANAGER	NIGERIAN
5	PHILIP UKASANYA	MARKETING MANAGER	NIGERIAN
6	EKA IBEH	HUMAN RESOURCES MANAGER	NIGERIAN
7	VICTOR IWENDI	ACCOUNT/ADMIN MANAGER	NIGERIAN
8	ISAIAH E. MOSES	COMMERCIAL MANAGER	NIGERIAN

9



NIGERIAN CONTENT DEVELOPMENT



- MSL Is Incorporated In Nigeria
- MSL Is 100% Owned By Nigerians
- MSL Is 98% Nigerian's Staffing
- MSL Is Committed To Core Competency Development
- MSL Is Committed To Executing All Work In-Country

10



SCOPE OF OPERATION

- Machine Shop and Fabrication Shop
- Mechanical maintenance / Workshop services
- Engineering Services



- Procurement Services
- Construction/Field Fabrication Services

11



MACHINE SHOP AND FABRICATION SHOP

- ✱ Machining & Metalizing services
- ✱ Mechanical maintenance
- ✱ Workshop services
- ✱ Mechanical Hook-up



- ✱ Maintenance Blasting & Painting
- ✱ Hot-Dip Galvanizing services
- ✱ Equipment maintenance and support
- ✱ Rewinding of Coils (Motors, Transformers, Relays etc)

12



MACHINE SHOP AND FABRICATION SHOP

Machine and metalizing

MSL has wide range of capabilities including surface grinding, milling, drilling and turning of piping related parts like flanges, stub ends, filter rings, spacers, adapters, orifice plates, spool pieces etc.



Others are pump parts like shafts, sleeves, bushings, backing plates, etc and certain components of valves, heat exchangers and many others.

13



Machine Shop and Fabrication Shop



❁ Pipelines Systems

MSL's pipeline experiences cover the full spectrum from initial studies to construction of parts of the pipeline systems.

MSL's pipeline studies include analysis of the flow conditions, types of drivers, driver speeds and control methods.

A good number of MSL's personnel have station-operating experiences and phases of projects development.



14



Machine Shop and Fabrication Shop



- ❁ Machining & Metalizing services
- ❁ Mechanical maintenance
- ❁ Workshop services
- ❁ Mechanical Hook-up
- ❁ Maintenance Blasting & Painting
- ❁ Hot-Dip Galvanizing services
- ❁ Equipment maintenance and support



15



MACHINE SHOP AND FABRICATION SHOP



✿ Process Facility

MSL's personnel have front-line experiences with Gas Gathering Systems and Gas Processing facilities. The types of facilities include compressor stations, gas treatment, liquid recovery, and all of the related services required for grass root installation.



16



MACHINE SHOP AND FABRICATION SHOP



✿ Hot-Dip Galvanizing

In addition to grit/sand blasting outfit, MSL has fully mechanically operated Hot-Dip galvanizing plant to treat carbon and mild steel structures against rust. Our galvanizing plant can handle any size of structural steel.



17



ENGINEERING SERVICES

- Structural engineering
- Mechanical engineering
- Pipeline engineering
- Environmental engineering



EEPNL's Air End Compressor
Overhauled by MSL 2009

- Scheduling and estimating
- Plant Audits (Safety & Environment)

18



ENGINEERING SERVICES



- Project management.
- Process engineering
- Fire & safety engineering
- CAD drafting
- Instrumentation engineering
- Electrical engineering
- Mechanical Engineering

19



CONSTRUCTION/FABRICATION SERVICES

- Topside Fabrication
- Structural Fabrication and assembly
- Pipe Pre Spool Fabrication and Installation
- Electrical & Instrument Control Panel Fabrication
- Onshore/Offshore Services



20



PROCUREMENT SERVICES

- Mechanical Systems Limited has the required personnel with relevant expertise and outstanding experience in procurement related activities.



- MSL maintain a worldwide procurement Data Bank of quality Vendors of Oilfield products and spare parts covering availability, competitive pricing and target delivery by early and close liaison with OEMs using our affiliates, where necessary.

MSL TECHNICAL PARTNERS

- Mechanical Systems Ltd, Buying House, Sugar land, Texas USA
- Quadstar Energy Services. USA

21



MSL BANKERS

- Mechanical Systems Limited has excellent goodwill and support from the financial sector of the economy which guarantee access to foreign and local credit needs. Some of our banks are:

LOCAL BANKS

■ Guaranty Trust Bank

Trans Amadi Industrial Area
Port Harcourt

■ Fidelity Bank Plc

Trans Amadi Industrial Area
Port Harcourt

22



MSL JOB REFERENCES

S/NO.	DESCRIPTION	COMPANY	DATE
1	Call Off Contract For Fabrication Services	Addax Petroleum Development	2010 - 2013
2	Provision of Onshore maintenance workshop services for ERHA FPSO	ExxonMobil	2008-2011
3	Emergency Flow line Replacement	Ascot F&C/ SPDC	2005-2006
4	Flow line Construction and replacement	Ascot F&C Nigeria and SPDC	2006-2007
5	Fabrication of pipe spool	Ascot F&C	2006-2007
6	Repair of 10" Export Line at Izombe to Ebocha	Addax Petroleum Development	Mar-2010
7	Fabrication and Hook-up of manifolds for Njaba crude	Addax Petroleum Development	Apr-2010
8	Grinding of Steering Mill to	Weatherford	27-Oct-08
9	Grinding of Steering Mill to	Weatherford	
10	Recutting of 3½" IF pin % box	Tecon Oil Service	7-Nov-08
11	Recutting of 3½" FHC pin % box	Tecon Oil Service	7-Nov-08
12	Maching of pad eyes (boring of holes for shackles)	Ascot Fabrication	12-Nov-08
13	Boring of 114 dia hole on 12mm thick plate	Ascot Fabrication	17-Nov-08
14	Drilling of 2½" hole on 50mm plate	Ascot Fabrication	23-Nov-08

23



MSL JOB REFERENCES

15	Machine engine shim side clutch in line with given dwg.	Novel Eng.Nig. Ltd.	4-Dec-08
16	Machine engine shim side radiator in line with given dwg.		
17	Threading connector regular pin	Tecon Oil Service	16-Jan-09
18	Threading connector FH Box		
19	Threading FH Pin	Tecon Oil Service	19-Jan-09
20	Threading Reg.Box		
21	Threading IF Box		
22	Threading IF Pin		
23	Threading HTSS Box	ABM Global Services	22-Jan-08
24	Re-threading both end (BTC Connector) 15 lght		
25	Blasting and Painting of basket WF619 & WF621	Weatherford	30-Jan-08
26	Blasting and Painting of basket WF630 & WF606		
27	Blasting and painting of cement head rack, 20 pcs pad eye, 12 pcs u channel and 7 pcs of pipe		
28	Haulage and handling	Tecon Oil Service	27-Jan-09
29	Threading connector HT55		

24



MSL JOB REFERENCES

30	Pin & Box threading API-5L schedule 40 x 20xm length material supply and cutting	Jeff Tony	
31	3" dia. Sch40 coated pipe to be threaded both end with NPT X 35mm length	PJ. Engineering	2-Feb-08
32	to turn out pipe from spiral shape to cylindecal shape	Mr. Osita	4-Feb-09
33	To remove the existing T.C.I from 14½" OD stabilizer and grid down to 14¼" OD	Halliburton	7-Oct-08
34	To remove the existing T.C.I from 15½" OD stabilizer and grid down to 15½"OD	Halliburton	7-Oct-08
35	Partial redressing on 15½"	Halliburton	7-Oct-08
36	Partial redressing on 15½"	Halliburton	7-Oct-08
37	Partial redressing on 12½"	Halliburton	7-Oct-08
38	Partial redressing on 12½"	Halliburton	7-Oct-08
39	Partial redressing on 15¾"	Halliburton	7-Oct-08
40	To remove the existing T.C.I from 11¾" OD stabilizer and grid down to 11¼" OD	Halliburton	7-Oct-08
41	To remove the existing T.C.I from 15½" OD stabilizer and grid down to 15"OD	Halliburton	7-Oct-08
42	Partial redressing on 12" OD Motor sleeve stabilizer	Halliburton	17-Oct-08
43	Partial redressing on 14¾"	Halliburton	28-Oct-08
44	To remove the existing T.C.I from 15½" OD stabilizer and grid down to 15½" OD	Halliburton	28-Oct-08

25



MSL JOB REFERENCES

45	Re thread monel tubular joint OD 7½" x 74 lgth of 6% Eeg. Box	Halliburton	31-Oct-08
46	Partial redressing on 12¼" motor sleeve	Halliburton	29-Jan-09
47	Partial redressing on 12¼" motor sleeve	Halliburton	29-Jan-09
48	Partial redressing on 12¼" motor sleeve	Halliburton	29-Jan-08
49	Grind surface blade of 15¼" to 14¼" OD	Halliburton	04/03/09
50	To remove the existing TCI from 15 5/16	Halliburton	04/03/09
51	Partial redressing, grind the surface of the damage area 15½"	Halliburton	04/03/09
52	Cross-over Sub: 2 7/8" TT PAC Pin x 3 1/2" EUE BOX.	Tecon Oil Service	17-march-2009
53	Cross-over Subs: 3 1/2" EUE Pin x 2 1/2" TT Pac	Tecon Oil Service	
54	Cross-over Subs: 2 7/8" TT Pac Box, x 2 3/8" IF	Tecon Oil Service	
55	Grinding of stabilizer to 17 1/2" of 1/16	Tecon Oil Service	
56	Materia/Machinig of 13" Pully.	Chesroc Nig Ltd.	24-march-2009
57	Extracting stuck pins and retapping with 7/16" on First Stage Stator	Siemens Limited	Nov. 7, 2009
58	Complete Overhaul of Danmar Air End Compressor	EEPNL	Oct. 2009
59	Machining of 2 Hubs for Instrument Air Compressor	EEPNL	Oct. 2009

26



MSL JOB REFERENCES

60	Supply of Cement basket	<i>Weatherford</i>	12-09-05
61	Supply of Tubing racks and cargo Basket	<i>weatherford</i>	19-03-05
62	Supply and Installation of OD line Pipes	<i>Weatherford Nig. Ltd</i>	20-04-04
63	Recut 7-5/8" reg box conn.	Petrodynamics Ltd	21/2/06
64	Modify ABH bottom/adaptor drilllex tool. 8-5/8 special pin and box recut and parkerization	Petrodynamics Ltd	21/2/06
65	Recut 7-5/8 reg box conn	Petrodynamics Ltd	21/2/06
66	Recut 6-5/8 reg box conn.	Petrodynamics Ltd	21/2/06
67	Modify ABH bottom/adaptor drilllex tool. 8-5/8 special pin and box recut and parkerization	Petrodynamics Limited	21/02/06
68	Output shaft, machine crack on centre and rebase pin conn. (special conn) and pakerization	Petrodynamics	21/2/06
69	Repair services on breakout machine	Halliburton Nig. Ltd	14/3/06
70	Pipe Threading	DWC Nig Ltd	18/2/06
71	Machining /Welding of Piston Pullout	Halliburton Nig. Ltd	30/3/06
72	Fabrication of skips	Tonal-Buchi Nig Ltd	05/04/06
73	Recut 6 5/8" reg pin x box	Halliburton Nig Ltd	13/4/06
74	Recut OD tools R/pin x box	Halliburton Nig Ltd	04/05/06

27



MSL JOB REFERENCES

75	Repair of wear out part of the jaws	Halliburton Nig Ltd	17/07/06
76	Redressing sleeve stabilizer	Halliburton	20/09/06
77	Build and grind to 15 7/8" motor stab	Halliburton Nig Ltd	05/10/06
78	Grind heatfill pitted sleeve stab	Halliburton Nig Ltd	11/12/06
79	Redress OD 17 1/2" stab	Halliburton Nig Ltd	16/04/07
80	Fabrication of 2.2m ³ cutting skips	Lambic Tech. And General Services	27-7-05
81	Reconditioning of Pump Shaft	Eleme Petrochemical Company Ltd	26-01-04
82	Reconditioning of Turbine Rotor 1-PT-20IA	Eleme Petrochemical Company Ltd	23-03-04
83	Refurbishing the Wash Oil Pump & Gear Box of 1-P-17B	Eleme Petrochemical Company Ltd	31-08-04
84	To bore, cut hole on ring to 40"x 36"x 4"	Remm Oil Services	4-05-03
85	Reconditioning of shafts, wear rings and	Eleme Petrochemical Company Ltd	06-10-03
86	Reconditions of 2 Pcs Pump Shaft and to Provide 5 pcs Bushings.	Eleme Petrochemical Company Ltd.	5-5-02
87	Reconditions pump Shaft N3-905 for P.E. Plant.	Eleme Petrochemical Plant Nig. Ltd.	
88	(i) Reconditioning turbine Shaft (ii) Reconditioning of Bearing.	Eleme Petrochemical Ltd.	9-05-02

28



MSL JOB REFERENCES

89	Reconditioning of 1" 4 Pcs station Hay Pivoted Shoe PAO (iii, 3 Pcs Stationary Pivoted Shoe PAD with temp sensor.	Eleme Petrochemical Company.	11-03-03
90	Furnish material and fabricate strong x 6 FT wire 1.D Loading sainecey Sandblast & paints	Star Ap	29-6-01
91	Refurbish shaft for export vessel.	Walvis Nig. Ltd	1-07-02
92	Install Rings, 8 Weldings @ N1,800 per weld.	Vetco-Gray	13-11-01
93	Supply materials fabricate, sandblast St. & paint blue, racks as per sketch supplier.	Vetco – Gray	10-10-01
94	Off-Set Riser Modification	Star Ap	14-11-02
95	Install 30"ML Landing ring into 30RLY intermediate Joint. 2 welds @ 1,800 per weld excluding x ray stress relieving	Vetco Gray	14-11-01
96	Reconditioning of turbine shaft & Bearing	Eleme Petrochemical	9-8-02
97	Manufacture of 12" Flanges Class 300	Amber Resources	29-5-02
98	Supply Materials & Manufacture 12 Blind Flanges Class 300 as per specification.	Amber Resources	

29



MSL JOB REFERENCES

99	Supply materials & manufacture pin as sample.	Weatherford Nig. Ltd	10-1-02
100	Weld 36" x 1.5" Box and Pin Connectors to 36" x 1.5 Pipe 2 Welds Per Pipe 4 Welds @ 2,800 Each.	Vetco Gray Nig. Ltd.	01-12-01
101	Equipment hire no. of days = 20 no. of Laborers = 20. 5% Vat inclusive	Vetco Gray Nig. Ltd	06-03-02
102	Supply materials fabricate, sandblast St. & paint blue, pipe racks as per sketch supplier.	Vetco - Gray	10-10-01
103	Weld 26" x 1" Landing Ring to 26"x1x" Pipe as per Vetco Specification	Vetco Gray Nig. Ltd.	2-12-02
104	Machining of 44" Dia of 2" Thick plate & mark as per drawing, material supplied by customer.	Remm Oil services	12-12-01

30



SOME OF MSL'S FINISHED PRODUCTS AFTER PAKERIZING



AUTOMATIC WELDING MACHINE



MSL 3 TONS ELECTRIC HOIST TROLLEY AND HEAVY EQUIPMENT



SOME OF MSL'S FINISHED PRODUCTS- MACHINING 6 5/8" DIA PIN BY HT 55 BOX

31